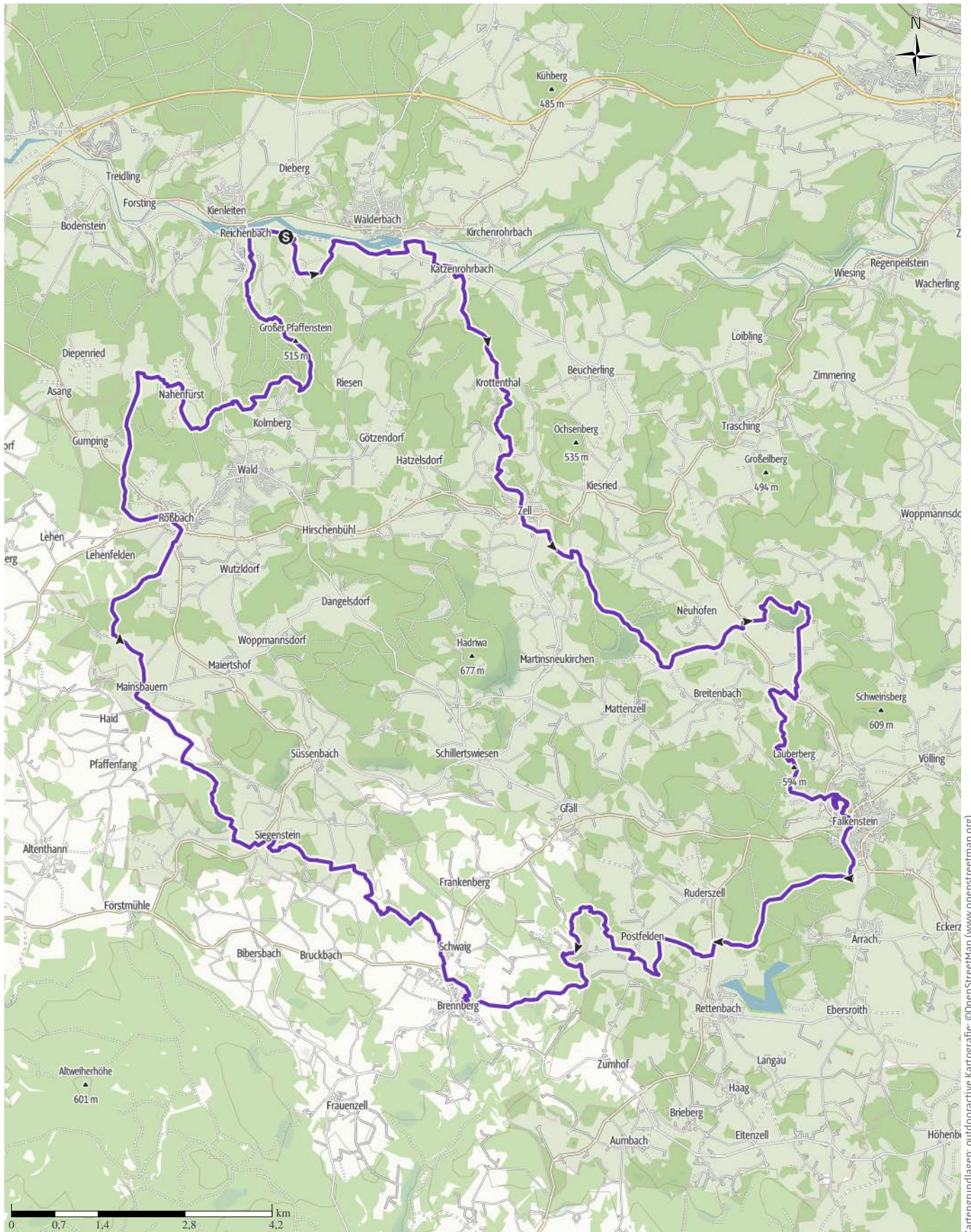


RWUT 2024 Ultra

↔ 63,2 km | ⌚ 10:40 h | ⬆️ 1.550 m | ⬆️ 1.550 m | Schwierigkeit -



Kartengrundlagen: outdooractive Kartografie; ©OpenStreetMap (www.openstreetmap.org)

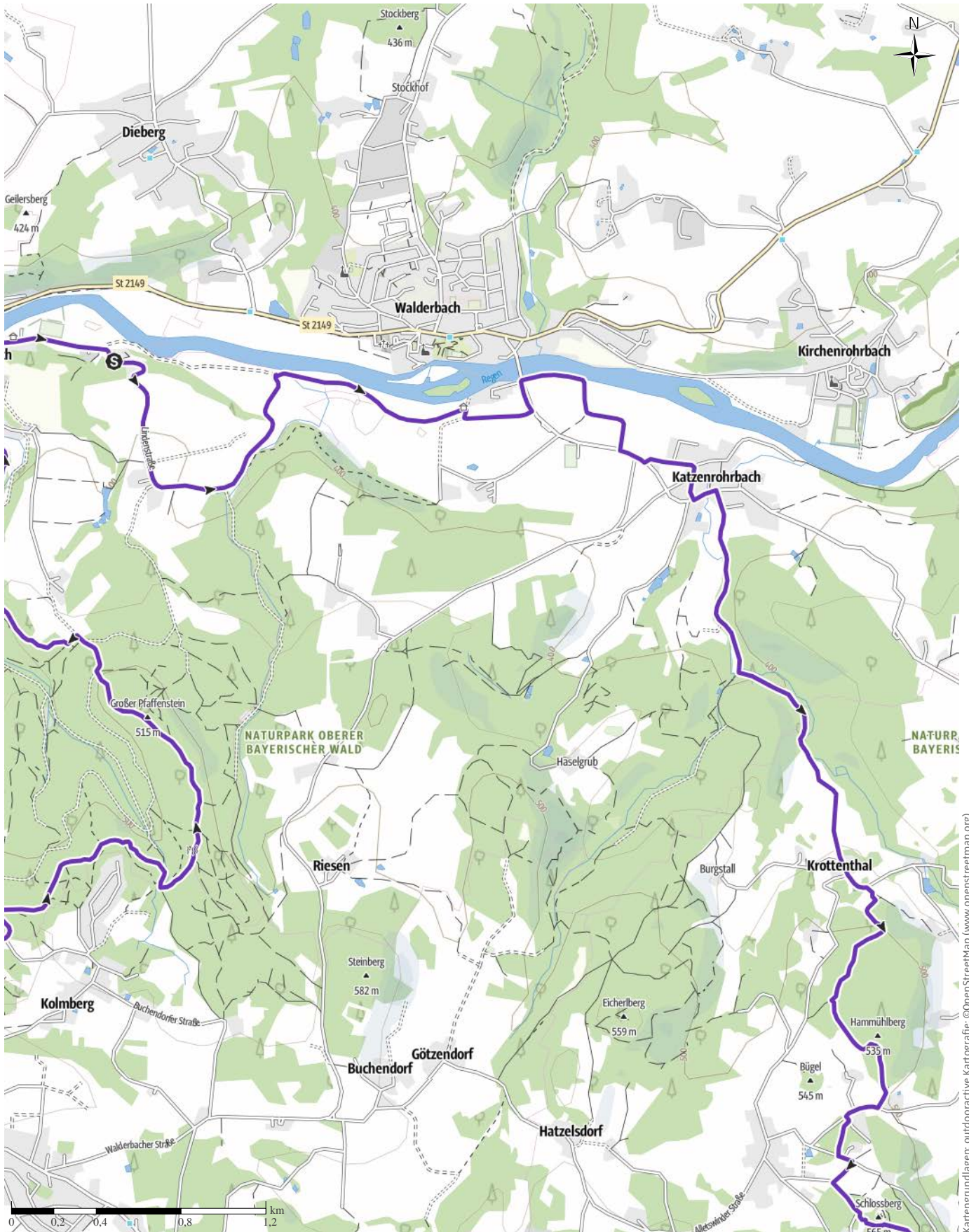
↔ 63,2 km

🕒 10:40 h

▲ 1.550 m

▼ 1.550 m

Schwierigkeit -



Kartengrundlagen: outdooractive Kartografie; ©OpenStreetMap (www.openstreetmap.org)

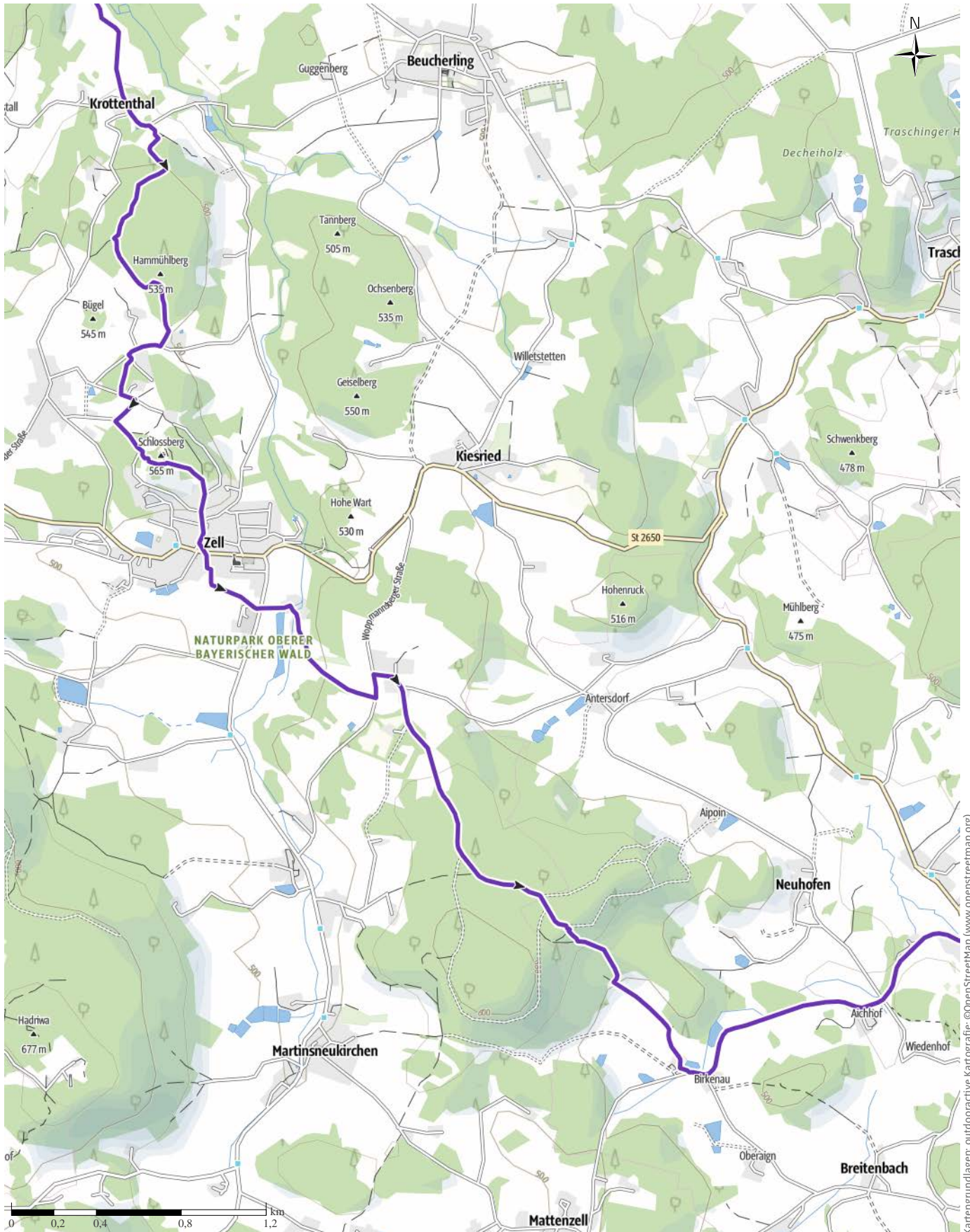
↔ 63,2 km

🕒 10:40 h

▲ 1.550 m

▼ 1.550 m

Schwierigkeit -



Kartengrundlagen: outdooractive Kartografie; ©OpenStreetMap (www.openstreetmap.org)

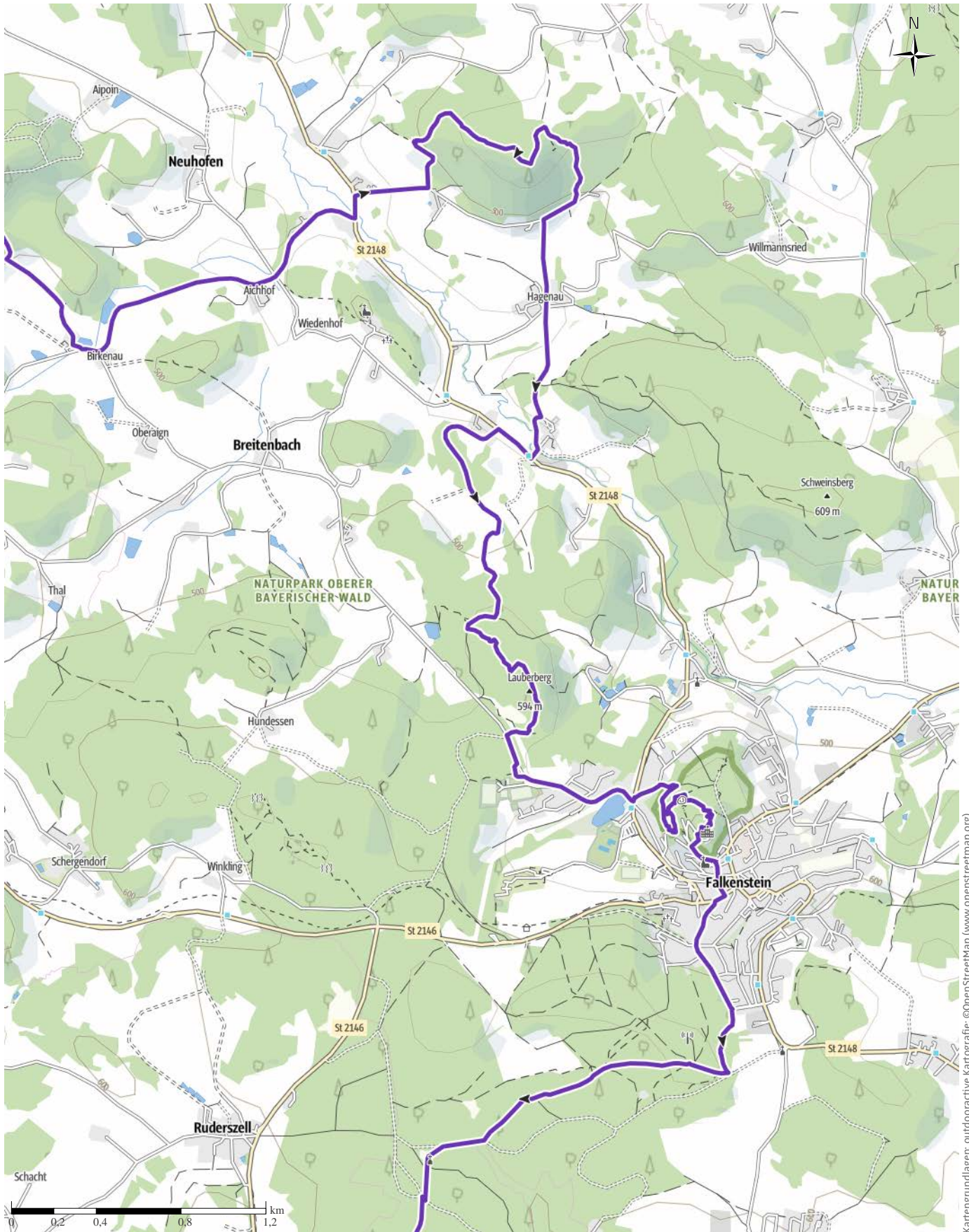
↔ 63,2 km

🕒 10:40 h

▲ 1.550 m

▼ 1.550 m

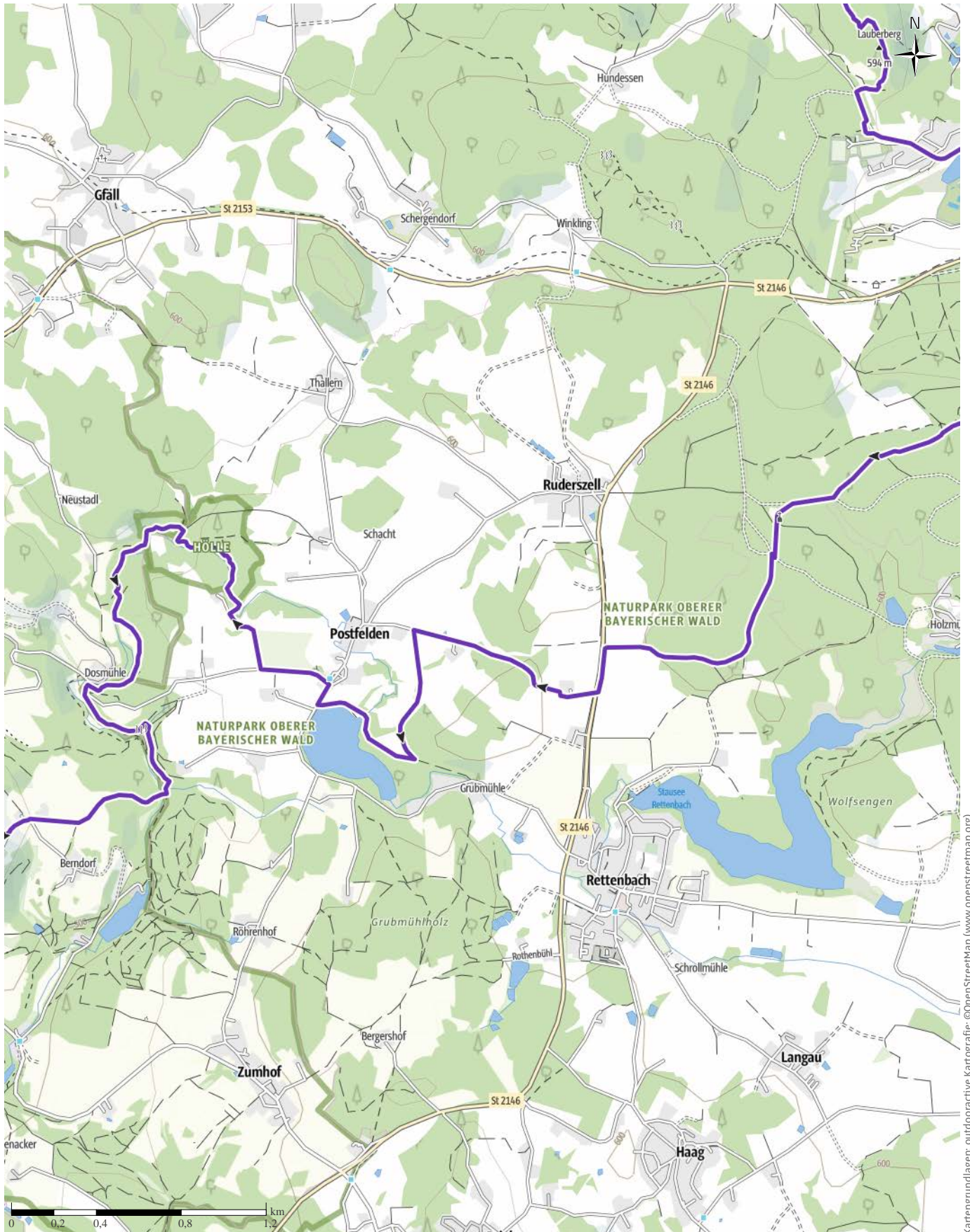
Schwierigkeit -



Kartengrundlagen: outdooractive Kartografie; ©OpenStreetMap (www.openstreetmap.org)

RWUT 2024 Ultra

↔ 63,2 km | ⌚ 10:40 h | ▲ 1.550 m | ▼ 1.550 m | Schwierigkeit -



Kartengrundlagen: outdooractive Kartografie; ©OpenStreetMap (www.openstreetmap.org)

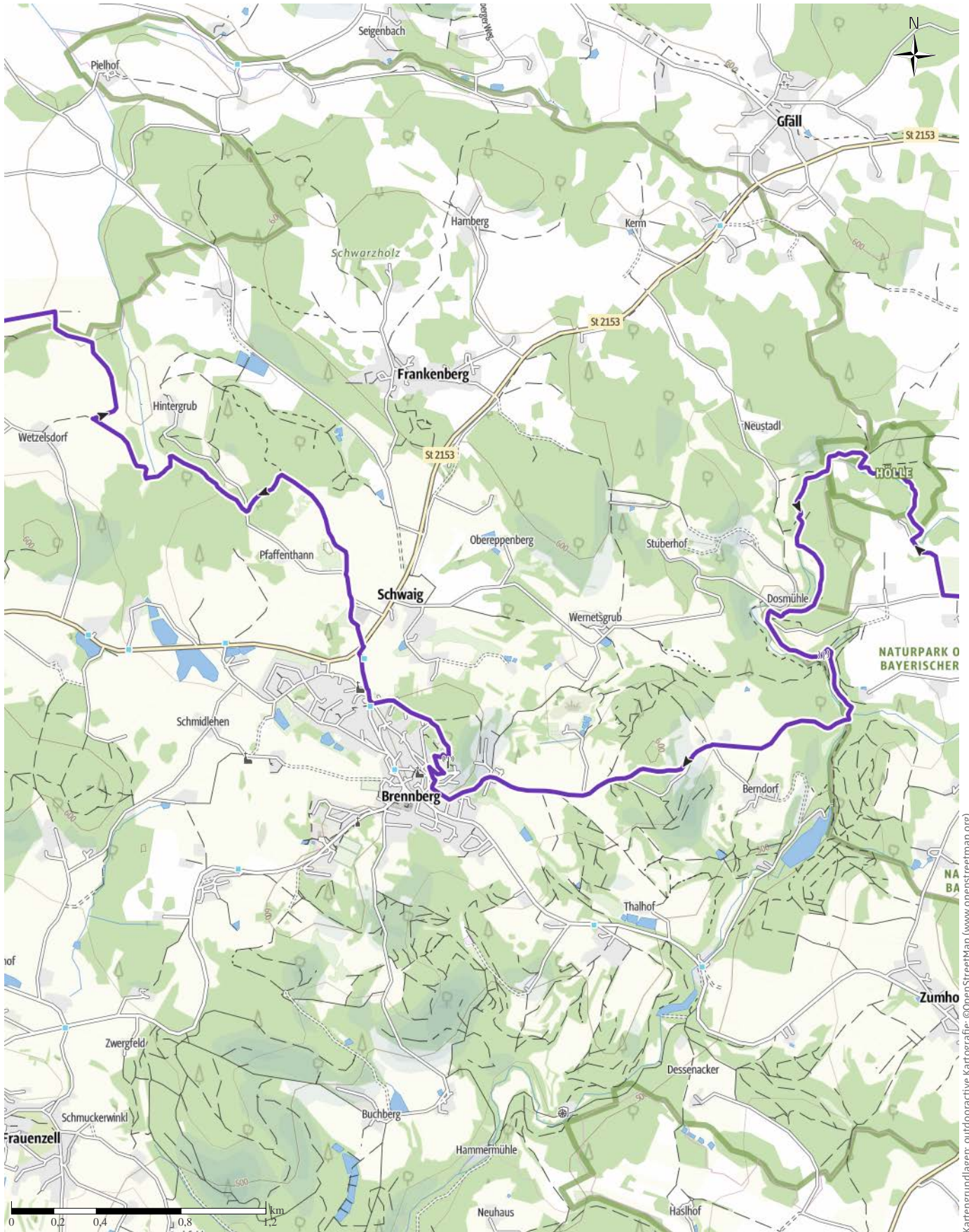
↔ 63,2 km

🕒 10:40 h

▲ 1.550 m

▼ 1.550 m

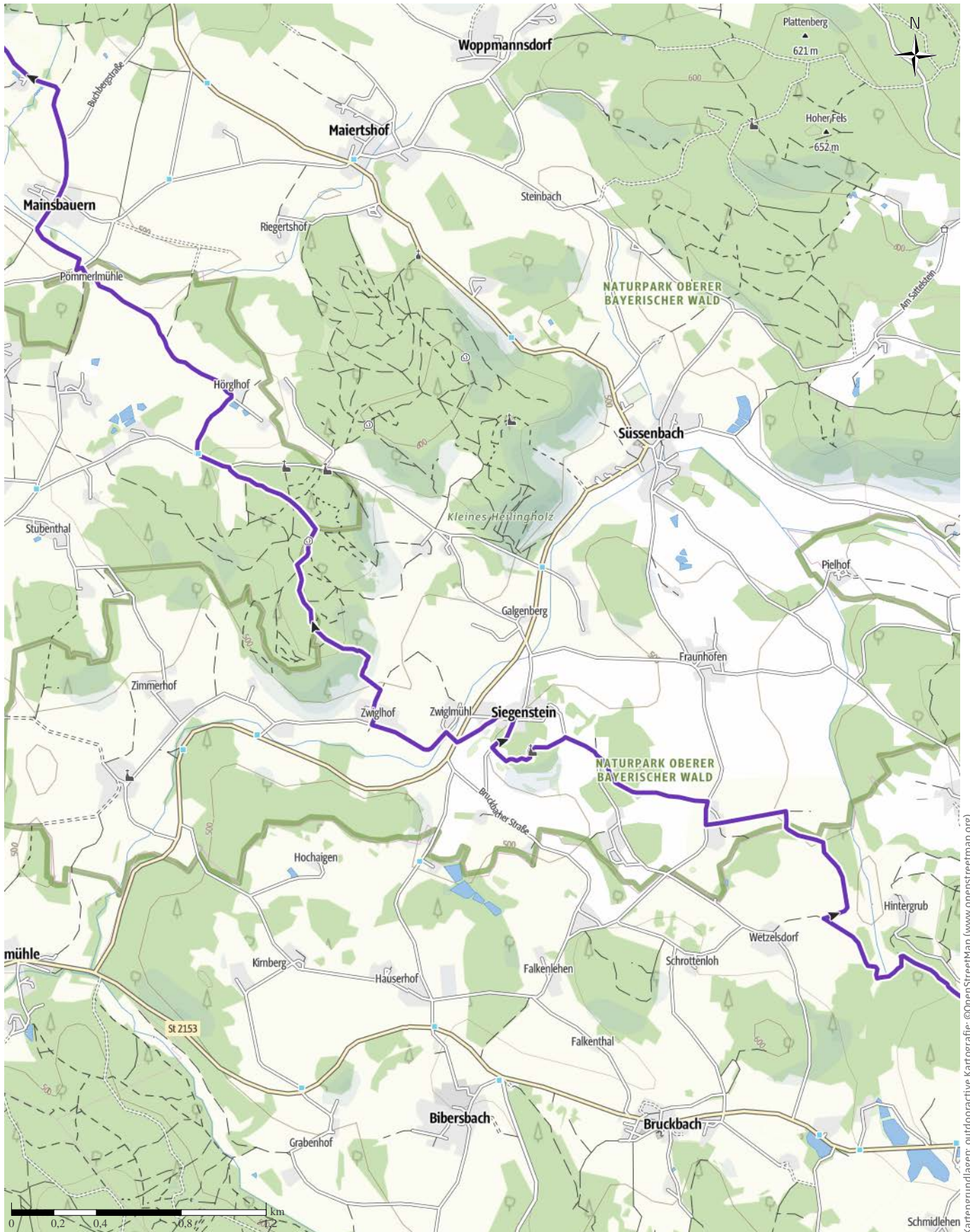
Schwierigkeit -



Kartengrundlagen: outdooractive Kartografie; ©OpenStreetMap (www.openstreetmap.org)

RWUT 2024 Ultra

↔ 63,2 km | ⌚ 10:40 h | ▲ 1.550 m | ▼ 1.550 m | Schwierigkeit -



Kartengrundlagen: outdooractive Kartografie; ©OpenStreetMap (www.openstreetmap.org)

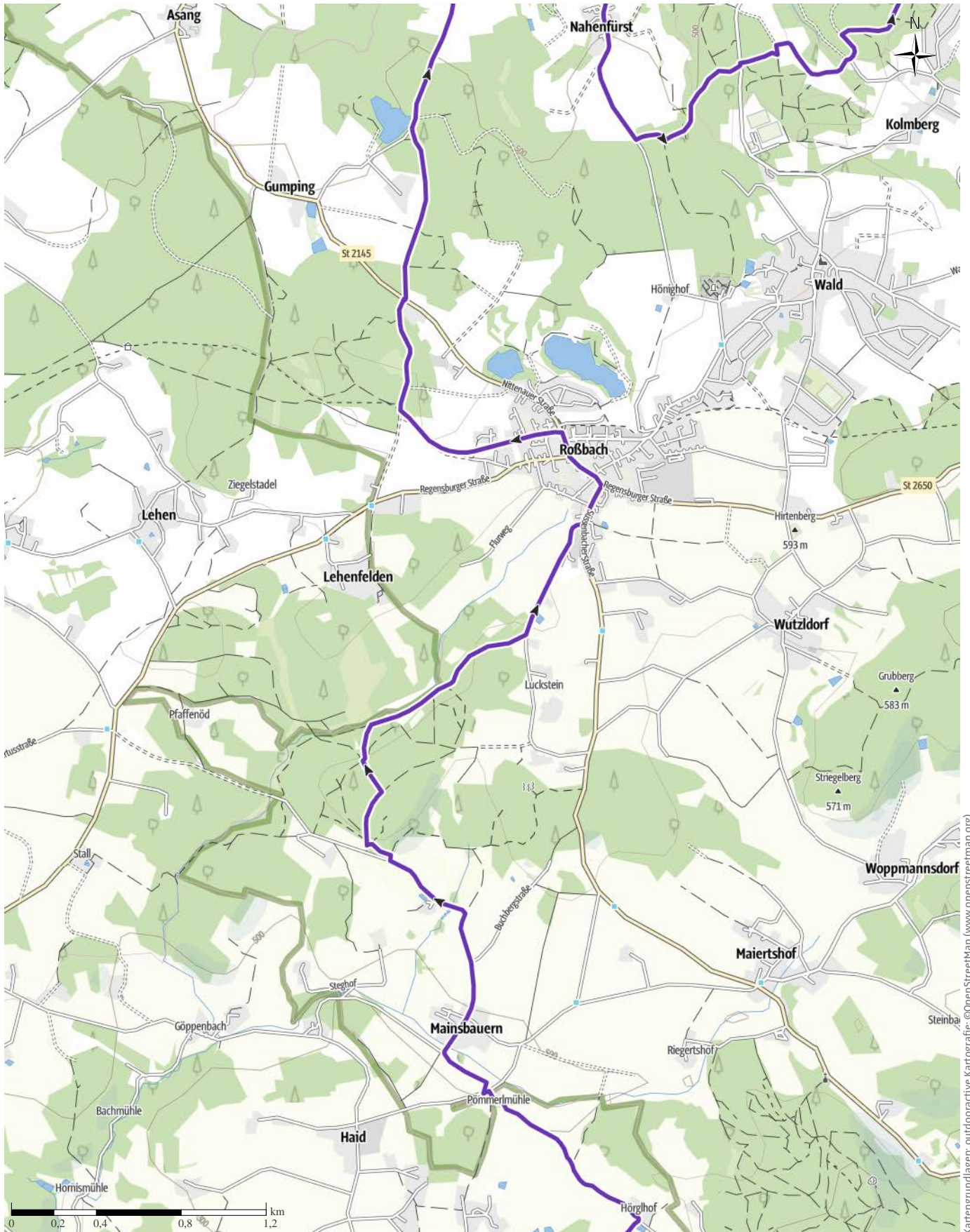
↔ 63,2 km

🕒 10:40 h

▲ 1.550 m

▼ 1.550 m

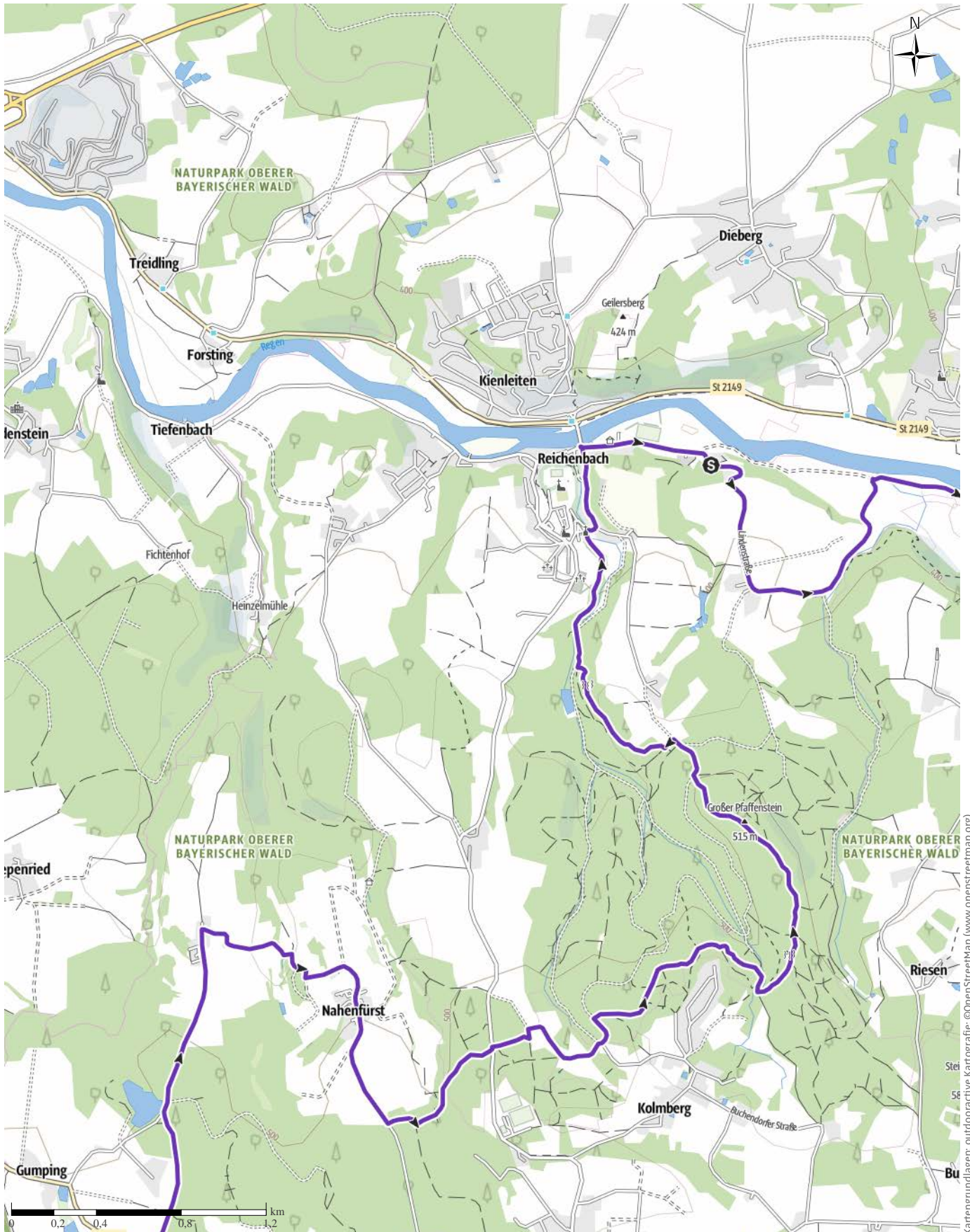
Schwierigkeit -



Kartengrundlagen: outdooractive Kartografie; ©OpenStreetMap (www.openstreetmap.org)

RWUT 2024 Ultra

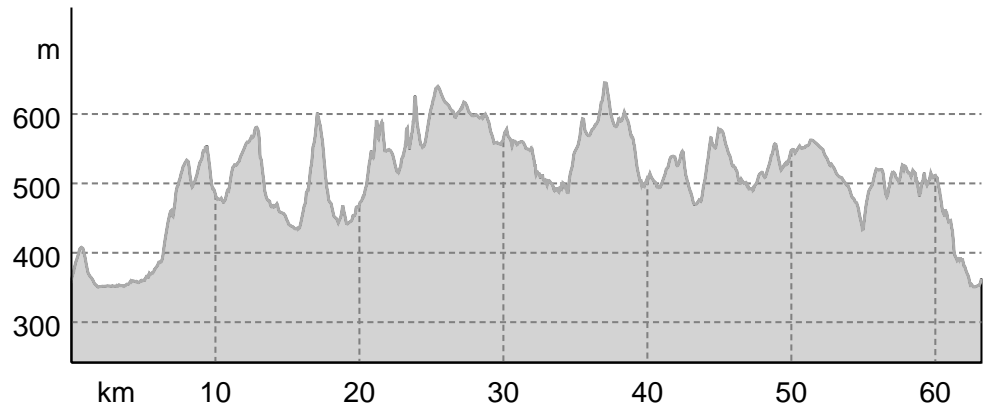
↔ 63,2 km | ⌚ 10:40 h | ▲ 1.550 m | ▼ 1.550 m | Schwierigkeit -



Kartengrundlagen: outdooractive Kartografie; ©OpenStreetMap (www.openstreetmap.org)

RWUT 2024 Ultra

Höhenprofil



Tourdaten

Trailrunning

Strecke ↔ 63,2 km

Dauer 🕒 10:40 h

Aufstieg ↗ 1550 m

Abstieg ↘ 1550 m

Schwierigkeit -

Kondition ●●●●●●

Technik ●●●●●●

Höhenlage



Beste Jahreszeit

JAN | FEB | MÄR
 APR | MAI | JUN
 JUL | AUG | SEP
 OKT | NOV | DEZ

Bewertungen

Autoren

Erlebnis ●●●●●●

Landschaft ●●●●●●

Community

Weitere Tourdaten



Christian Bley-Unger

Aktualisierung: 11.07.2024



QR-Code scannen und diese Tour offline speichern, mit Freunden teilen und mehr.

Webseite

<https://out.ac/IUcT9G>

RunFellows vorWald Ultra Trail Ultra Strecke am
 16.11.2024. Mehr Info aut <https://rwut.runfellows.com>









Wegpunkte

- 📍 VP Aichhof
- 📍 VP Postfelden
- 📍 VP Zwighof
- 📍 START/ZIEL

Tour zum Mitnehmen für iPhone und Android

Zeichenerklärung


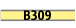

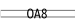



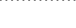
Topografie

	Wald, Forst
	Moor, Sumpf, Ried
	Heide
	Wohnbaufläche mit Einzelgebäude
	Gewerbefläche mit Einzelgebäude
	Friedhof
	Golfplatz
	Sportplatz, Stadion
	Stadion
	Freibad
	Weinberg
	Felszeichnung
	Staatsgrenze
	Landesgrenze
	Kreisgrenze
	Höhenlinie
	Sondernutzungsfläche
	Naturschutzgebiet


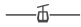

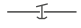






Topografische Einzelzeichen

	Berg/Gipfelkreuz
	Höhenpunkt
	Fels
	Höhle
	Kirche
	Kapelle
	Friedhof
	Schloss/Burg
	Kloster
	Denkmal
	Ruine
	Bergwerk
	Findling/Hügelgrab
	Sendemast/Turm
	Windrad
	Wasser-/Windmühle
	Aussichtspunkt

Straßen und Wege

	Autobahn
	Bundesstraße
	Kreisstraße
	Gemeindestraße
	Hauptwirtschaftsweg
	Wirtschaftsweg
	Fußweg
	Klettersteig

Lifte und Eisenbahn

	Großkabinenbahn
	Kabinenbahn
	Sessellift
	Ski-, Schlepplift
	Materialseilbahnen
	Eisenbahn
	S-Bahn
	U-Bahn
	Straßenbahn
	Bahnhof